

Características

Renda Fixa CDI	49,96%
Renda Fixa Inflação	38,85%
Fundos de Participações	4,69%
Renda Variável	3,08%
Internacional Europa	1,22%
Fundo Imobiliário	1,13%
Internacional Global	0,88%
Empréstimos	0,20%



Política de Investimentos: Investe os recursos, principalmente, em cotas de fundos que atuam em diversos mercados, sem o compromisso de concentração em fator de risco específico.

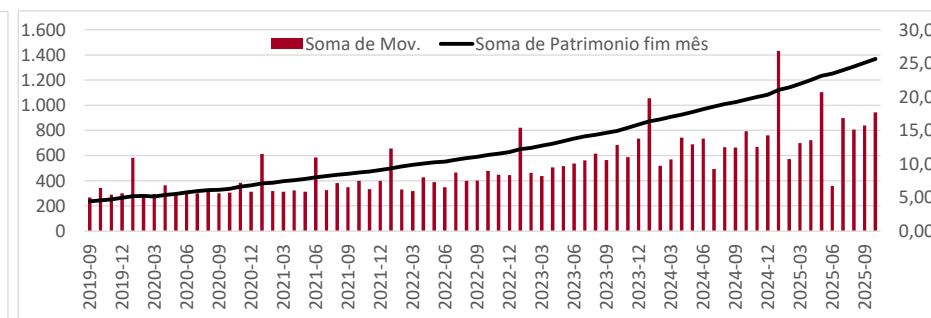
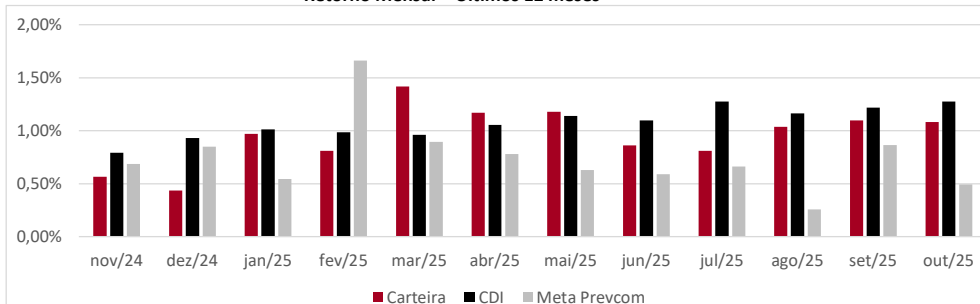
Meta Prevcom:
 IPCA+5% até 04/20
 IPCA+4% até 12/24
 IPCA+4,5% 2025

Retorno (%)	Ano	12 meses	24 meses
Carteira	10,94%	12,06%	24,55%
CDI	11,77%	13,71%	26,18%
IPCA	3,73%	4,68%	9,66%
Meta Prevcom	7,63%	9,29%	19,09%
IMA-B5	9,42%	9,51%	19,99%
Poupança	6,83%	8,06%	15,66%
IBOVESPA	24,32%	15,29%	32,17%
MSCI World	2,96%	12,18%	68,82%
MSCI Europe	9,07%	11,88%	52,36%

* Cf. MP 567/12

Gráficos

Retorno Mensal - Últimos 12 meses



Retorno Mensal (%)	out/25	set/25	ago/25	jul/25	jun/25	mai/25	abr/25	mar/25	fev/25	jan/25	dez/24	nov/24
Carteira	1,08%	1,10%	1,04%	0,81%	0,86%	1,18%	1,17%	1,42%	0,81%	0,97%	0,44%	0,57%
CDI	1,28%	1,22%	1,16%	1,28%	1,10%	1,14%	1,06%	0,96%	0,99%	1,01%	0,93%	0,79%
IPCA	0,09%	0,48%	-0,11%	0,26%	0,24%	0,26%	0,43%	0,56%	1,31%	0,16%	0,52%	0,39%
Meta Prevcom	0,49%	0,87%	0,26%	0,66%	0,59%	0,63%	0,78%	0,89%	1,66%	0,55%	0,85%	0,69%
IMA-B5	1,03%	0,66%	1,18%	0,29%	0,45%	0,62%	1,76%	0,55%	0,65%	1,88%	-0,28%	0,36%
Poupança	0,68%	0,68%	0,67%	0,68%	0,67%	0,67%	0,67%	0,61%	0,63%	0,67%	0,58%	0,57%
IBOVESPA	2,26%	3,40%	6,28%	-4,17%	1,33%	1,45%	3,69%	6,08%	-2,64%	4,86%	-4,28%	-3,12%
MSCI World	3,20%	1,04%	-0,72%	3,92%	-0,38%	6,58%	-0,69%	-6,38%	-0,50%	-2,58%	-0,45%	9,45%
MSCI Europe	1,88%	-0,09%	0,01%	0,76%	-2,54%	4,66%	2,34%	-2,47%	3,86%	0,58%	-0,25%	2,83%



: LÂMINA MENSAL - RP

outubro de 2025

Composição da Carteira			Retorno Nominal em % Retorno Relativo ao índice de referência											
Performance dos Fundos em Carteira			Mês			Ano		12 meses		Início do investimento			Patrimônio R\$ milhões	
Nome	Índice ref.	% PL	Início	Nominal	Relativo	Nominal	Relativo	Nominal	Relativo	Nominal	Relativo	Volatilidade		
NTN-B	IPCA	27,56%	15/ago/25	0,94%	0,85%					1,78%	1,27%		R\$	377,36
Bela Cintra FI RF	Meta Prevcom	11,30%	13/nov/13	0,80%	0,31%	9,57%	1,94%	11,07%	1,78%	280,24%	46,63%	0,47%	R\$	154,72
Itaú Inst Global Dinâmico RF	CDI	5,31%	20/fev/20	1,27%	99,39%	11,47%	97,43%	13,36%	97,47%	70,64%	104,00%	0,43%	R\$	72,70
BB RF Referenciado DI Tit Pub	CDI	5,10%	20/fev/25	1,27%	99,65%					9,84%	99,47%	0,08%	R\$	69,78
Itaú Institucional RF Referenciado DI	CDI	4,79%	15/fev/24	1,26%	98,53%	11,84%	100,56%	13,69%	99,92%	22,61%	101,51%	0,09%	R\$	65,54
Santander RF Ref DI Tit Público Hiper	CDI	4,54%	21/nov/24	1,28%	100,08%	11,80%	100,24%			13,06%	99,74%	0,09%	R\$	62,13
MAG Renda Fixa FI	CDI	3,84%	13/set/23	1,23%	96,47%	12,03%	102,17%	13,69%	99,87%	28,54%	101,31%	0,16%	R\$	52,63
Sul America Cred Institucional ESG FI F	CDI	3,80%	21/jun/23	1,21%	94,58%	12,54%	106,54%	14,20%	103,62%	37,74%	117,92%	0,20%	R\$	51,97
Itaú Soberano RF Simples LP FICFI	CDI	3,42%	02/set/19	1,27%	99,27%	11,69%	99,31%	13,57%	99,01%	70,64%	98,40%	0,08%	R\$	46,88
BNP Paribas Cred Inst FICFI RF CP LP	CDI	3,12%	11/out/23	1,28%	100,19%	12,20%	103,69%	14,09%	102,79%	28,48%	105,65%	0,10%	R\$	42,66
Itaú Institucionais Legend RF LP Fc	CDI	2,68%	02/out/19	1,16%	90,79%	11,40%	96,83%	13,70%	99,96%	81,54%	114,90%	1,32%	R\$	36,75
Porto Seguro RF DI CP	CDI	2,57%	18/jul/24	1,27%	99,16%	12,07%	102,54%	13,90%	101,43%	17,52%	102,24%	0,11%	R\$	35,13
Itau Inst BOV11 FIC FIA	Ibovespa	2,32%	04/ago/23	2,28%	0,02%	25,35%	1,03%	16,49%	1,20%	27,26%	2,13%	15,39%	R\$	31,74
Itaú Institucional Optimus RF LP FICFI	CDI	2,21%	29/abr/22	1,20%	93,97%	10,01%	85,04%	12,68%	92,50%	51,53%	98,28%	0,58%	R\$	30,26
BTGP Economia Real FIP Multi	IPCA+6,5%	2,03%	19/out/20	-0,19%	-0,86%	10,87%	1,52%	10,88%	-0,58%	131,89%	45,36%		R\$	27,85
XP Corporate Light FI RF CP LP	CDI	1,96%	24/jan/23	1,23%	96,41%	11,94%	101,44%	13,76%	100,37%	40,95%	105,32%	0,14%	R\$	26,86
Sul América Excellence FI RF CP	CDI	1,65%	24/jan/23	1,23%	96,61%	11,92%	101,30%	13,73%	100,21%	41,83%	107,58%	0,24%	R\$	22,55
BTG Pactual Créd Corp I FIOFI RF CP	CDI	1,56%	30/ago/21	1,10%	85,84%	12,24%	103,99%	13,87%	101,21%	68,63%	112,33%	0,31%	R\$	21,32
LFT	CDI	1,37%	05/dez/23	1,00%	78,44%	10,61%	90,18%	11,96%	87,26%	22,76%	91,52%		R\$	18,71
Vot Allianzgi Euro Eq Growth FIM IE	MSCI Europe	1,22%	22/mai/19	2,05%	0,17%	-6,55%	-15,62%	-4,81%	-16,69%	88,57%	-18,47%	20,26%	R\$	16,70
Inter Corporate RF Crédito Privado	CDI	1,03%	15/mai/24	1,28%	100,14%	11,91%	101,19%	13,81%	100,79%	19,49%	101,39%	0,09%	R\$	14,06
Schroder Sustent Ações Globais IS IE	MSCI World	0,88%	24/mai/24	4,81%	1,61%	-0,53%	-3,49%	6,46%	-5,72%	21,69%	-10,87%	20,47%	R\$	12,02
AZ Quest Small Mid Caps Inst. FICFIA	SMLL	0,76%	09/jun/20	0,67%	0,24%	24,00%	-3,85%	20,45%	7,89%	40,13%	42,51%	14,42%	R\$	10,47
BTG Pactual Inv de Impacto FIP Mult	IPCA+6,5%	0,69%	30/ago/21	-0,19%	-0,86%	18,87%	9,52%	18,76%	7,30%	45,30%	-17,69%	20,50%	R\$	9,45
Spectra VI Institucional FIP Multiestrat	IPCA+8%	0,49%	31/mar/23	-0,82%	-1,62%	-2,54%	-13,18%	-7,17%	-20,19%	36,31%	0,40%		R\$	6,69
Pátria Private Equity Fund VII Feeder II	IPCA+7%	0,47%	28/set/23	0,32%	-0,39%	3,34%	-6,44%	8,88%	-3,10%	19,07%	-7,54%		R\$	6,37
Rio Bravo Renda Varejo FII	IFIX	0,45%	20/dez/23	5,56%	5,44%	21,06%	1,06%	10,54%	-1,59%	7,14%	-4,72%		R\$	6,16
BTG Pactual Economia Real II FIPM CL	IPCA+8%	0,42%	04/mai/23	-0,71%	-1,51%	14,52%	3,88%	12,62%	-0,40%	-4,48%	-38,66%		R\$	5,71
BTG Pactual Explorer Inst FI RF LP	CDI	0,38%	13/mar/24	1,21%	95,21%	12,38%	105,17%	14,13%	103,10%	19,00%	89,18%	0,99%	R\$	5,19
VBI Prime Properties FII	IFIX	0,37%	20/dez/23	-4,81%	-4,93%	2,95%	-12,37%	-0,06%	-12,19%	-15,57%	-27,43%		R\$	5,05
Tivio Banks RF Crédito Privado FI	CDI	0,36%	10/nov/23	1,28%	100,72%	11,90%	101,07%	13,84%	100,99%	26,53%	102,93%	0,09%	R\$	4,97
Fator Verita Multiestratégia Imobiliári	IFIX	0,31%	22/jul/24	1,46%	1,34%	15,97%	0,65%	6,46%	-5,67%	-21,01%	-26,99%		R\$	4,21
Bradesco RF Referenciado DI Federal E	CDI	0,29%	12/ago/24	1,24%	97,47%	11,50%	97,67%	13,33%	97,28%	15,92%	97,36%	0,08%	R\$	4,03
BTG Pactual Infraestrutura III FIP Mult	IPCA+8%	0,22%	02/jul/24	132,12%	131,32%	67,92%	57,28%	83,29%	70,27%	5,22%	-12,39%		R\$	3,03
Perfin Voyager FIP Infra	IPCA+6%	0,22%	13/jun/24	-3,23%	-3,85%	124,51%	115,59%	124,51%	113,57%	103,24%	88,02%		R\$	2,97
Carteira de Empréstimos	CDI	0,20%	05/dez/23	1,00%	78,44%	10,61%	90,18%	11,96%	87,26%	22,76%	91,52%		R\$	2,68
Vinci Partners IV Feeder	IPCA+6%	0,15%	25/abr/24	-1,54%	-2,16%	-0,12%	-9,04%	-10,91%	-21,85%	-8,91%	-25,71%		R\$	2,12
Patrimônio Total:													R\$	1.369,44